

User Management

Manual User settings backup

With 2D Software it is possible to copy all User settings of a WinARace installation to a synchronizing directory, such as a server or a USB stick.

The upload to a server or USB stick can either be used as a backup functionality or to share/copy User settings to other PC.

Each time a 2D module is **read into WinIt** or the **setting is sent to the module via apply**, the current setting of the module is saved in a WinARace directory to ensure that it is always possible to step back to an older, correct setting of the module.

Beside the module's settings, also and especially the Analyzer templates (with plots) are included at the User settings.

In this manual it is described how a backup of User settings can be prepared and executed via toolbar button.



Important information

When the backup is executed, only newer files are overwritten and not all files are copied again!

In addition to the option of executing the backup each time by clicking on the button in the toolbar, the software can also be automated so that the backup is run automatically on a regular basis. The days between automatic backups can be freely selected.



Documentation reference

For more information about **User Management - Auto User settings backup** please see the respective manual on our website:

<http://2d-datarecording.com/downloads/manuals/>

The procedure of integrating backed up User settings on a new PC is described in an additional manual.



Documentation reference

For more information about integrating backed up User settings on a new PC please see the manual **User management – Integrating User settings** on our website:

<http://2d-datarecording.com/downloads/manuals/>

Preparations:

- Open **WinARace** on the PC to be backed up and under **Help** → **Search for software updates** update the software to the latest version
- Open **WinARace** on the PC to be backed up and set the synchronizing directory (e.g. USB stick or server directory where you want to copy your settings to) under **WinARace** → **Settings** → **Folders protocol** → **Settings synchronisation directory** (see Figure 1).

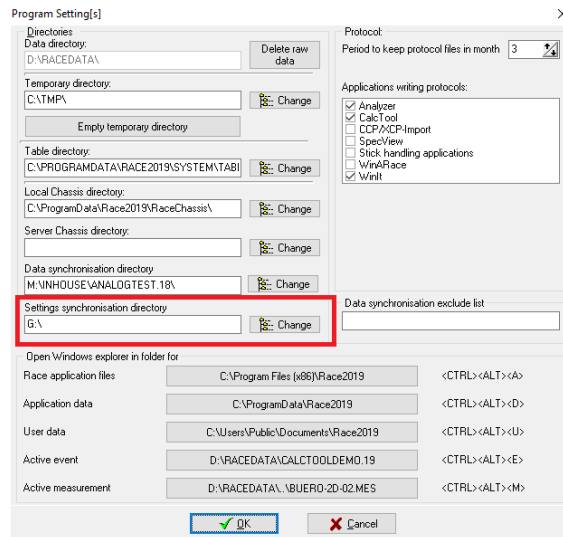


Figure 1 Directory for settings synchronizing settings

Further Information



In this selected directory all required settings for running your software on another PC are copied to.

The copied directory structure will consist of your current PC-user name and the used Race20__-Software name.

Execute User settings backup:

Press the "Start Batchfile to Copy 2D Software Settings to another Device" button in the WinARace toolbar (see Figure 2). The call starts the Windows command prompt (see Figure 3). To start the upload, follow the instructions at the command prompt (press any key).



Figure 2 WinARace-Toolbar

```
C:\Program Files (x86)\Race2020.15>echo OFF
1) Backup Dir for Winarace Settings "<SettingsSyncDir*" = ("S:\ALLGEMEIN\WINARACESETTINGS\*)
2) Race version "RaceVer*" = (Race2020.15)
3) Applikation Data Directory "APPDataDir*" = (C:\ProgramData\Race2020.15\*)
4) User Race Setting Directory "UserDataDir*" = (C:\Users\Public\Documents\Race2020.15\*)
5) Race Data Directory "RaceData*" = (D:\RACEDATA\*)
6) Race Program Directory "APPData*" = ("C:\Program Files (x86)\Race2020.15\*")
7) currently logged in PC User = (Florian Schneider)
from (C:\Users\Public\Documents\Race2020.15\*) To (S:\ALLGEMEIN\WINARACESETTINGS\Florian Schneider\Race2020.15\UserData)
from (C:\ProgramData\Race2020.15\*) To (S:\ALLGEMEIN\WINARACESETTINGS\Florian Schneider\Race2020.15\APPData)
from (C:\RaceData\*) To (S:\ALLGEMEIN\WINARACESETTINGS\Florian Schneider\Race2020.15\RaceData)
Drücken Sie eine beliebige Taste . . .
```

Figure 3 Windows command prompt



Further Information

In newer WinARace installation a new toolbar icon  is used for User settings update



Documentation reference

If toolbar button is not already existing, please see the manual **User Management – Add toolbar button for User settings backup** on our website:

<http://2d-datarecording.com/downloads/manuals/>

The folders shown in Figure 4 were automatically created by executing the batch file in the previous step at the location selected in the "Preparations" step (Figure 1).




 AppData	21.10.2019 10:54	Dateiordner
 RaceData	21.10.2019 10:55	Dateiordner
 UserData	21.10.2019 10:53	Dateiordner

Figure 4 Folder in the selected settings synchronizing directory