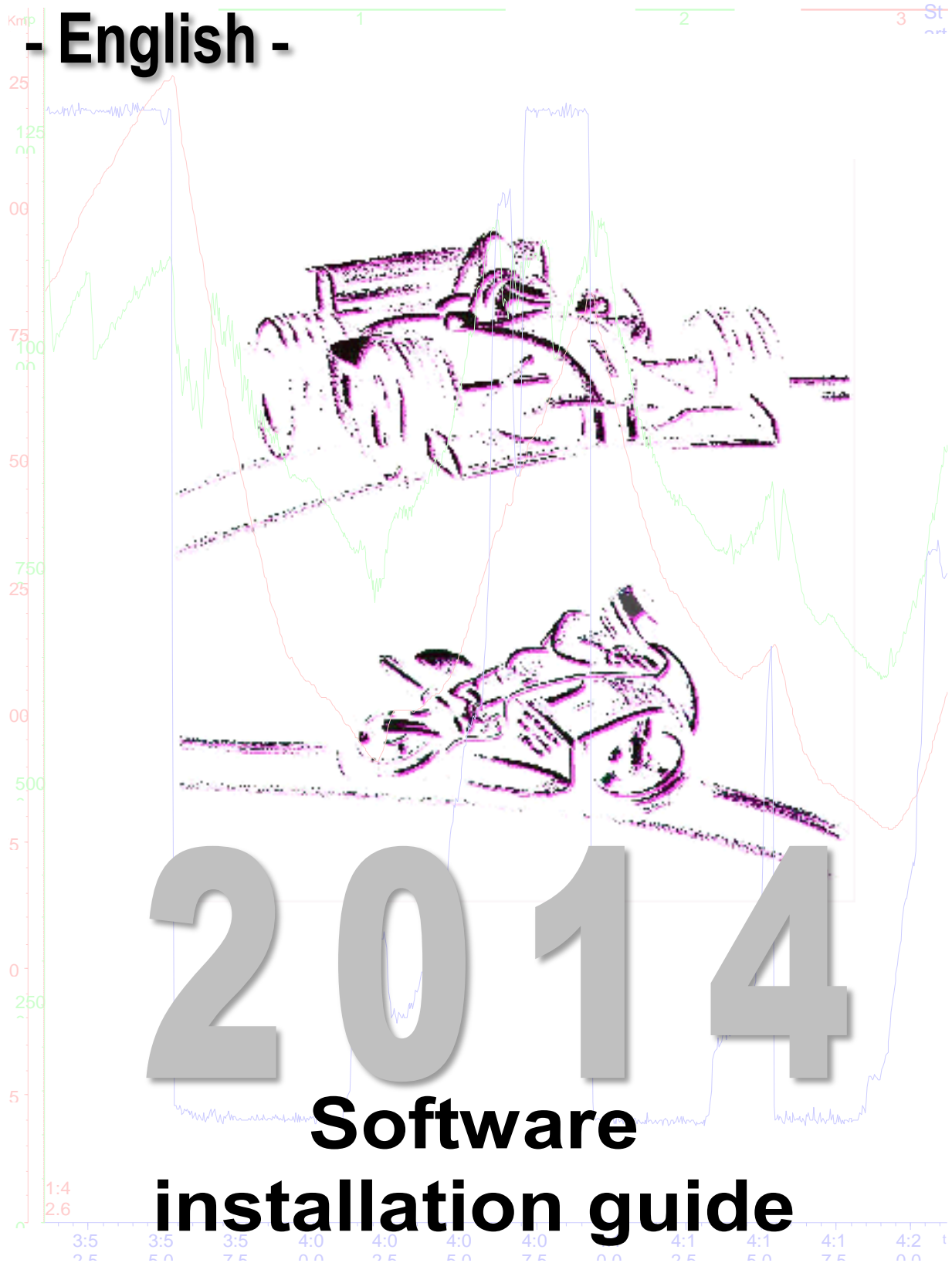




- English -



2014

**Software
installation guide**

Content

1	SOFTWARE INSTALLATION.....	3
2	LICENSING THE 2D SOFTWARE	5
3	HOW TO INSTALL THE 2D USB DRIVERS	6
4	HOW TO UPDATE THE SOFTWARE VIA INTERNET.....	8

Symbols used in the text



These paragraphs contain tips and practical advice for working with the 2D software.



In the paragraphs highlighted with this symbol, you will find additional information. It is very important that you follow the instructions given.

1 Software Installation

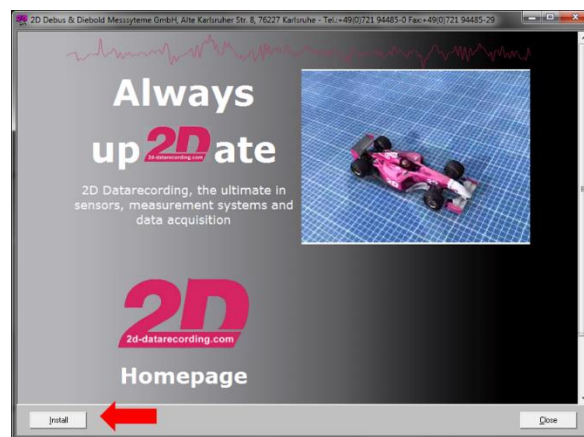


Before starting the installation of the 2D software please assure that you have **administrator rights** on your computer.

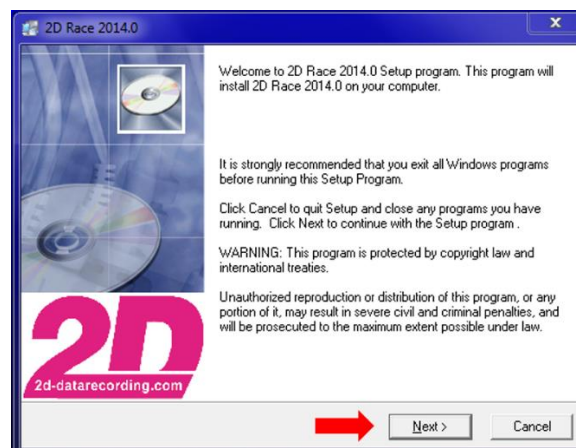
If you install the 2D Race software using a CD start with step 1.

If you downloaded the installation file from our Web page double-click the installation file and proceed with step 3.

1. Insert the 2D CD. The installation process will start automatically. If this is not the case, start the "AUTORUN.EXE" on the CD manually.
2. Start installation by selecting the <Install> button.

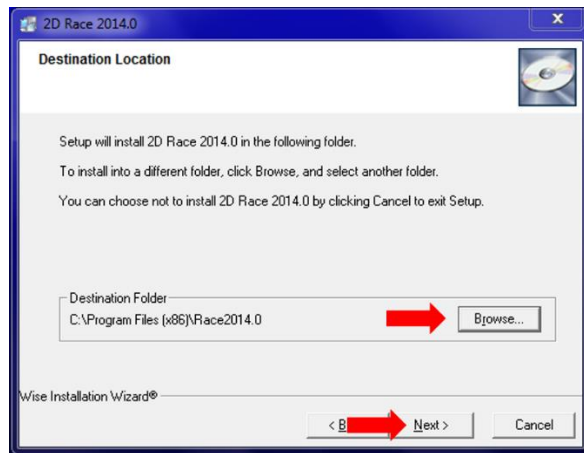


3. A set-up wizard guides you through the installation. Follow the instructions and confirm your actions.

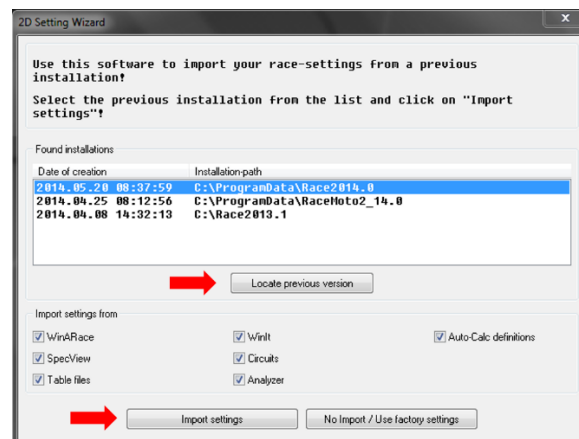


All required files including demo data will be installed automatically.

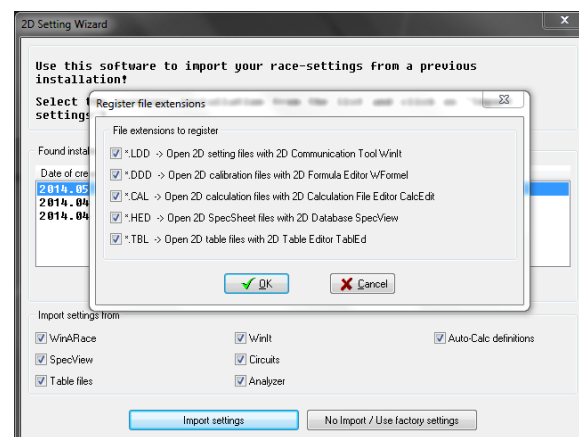
- The installer proposes a default installation path. If you wish to choose a different one click on **<Browse>**. After that click on **<Next>**.



- After that you can choose which settings from a previous version shall be copied to the new installation. The installer tries to locate all installations on your computer. However, in some circumstances it may not be able to locate those. By clicking on **<Locate previous version>** you can select the folder yourself.



- In the last step you can associate the 2D specific file extension with the 2D Race software.



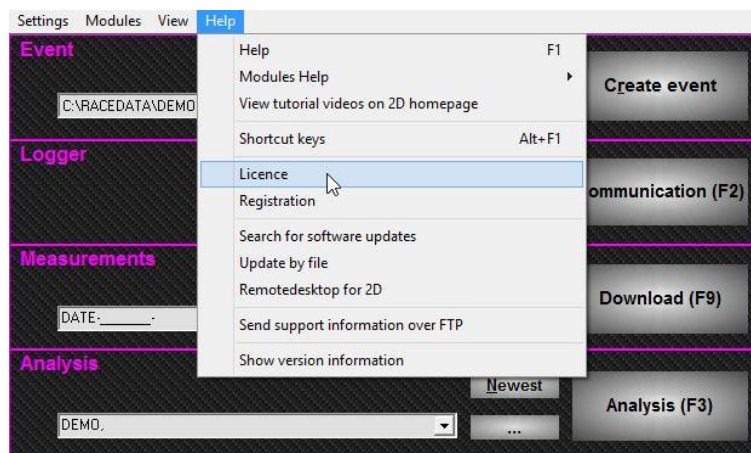
2 Licensing the 2D software

To be able to use all the features of your software, you have to license it.

When importing settings from a previously installed version an existing license is automatically imported if the license level fits with the newly installed software. (see step 6 in the previous chapter). Then the newly installed Race software is ready for use.

If you install the Race software for the first time, or the import of an existing license is not possible you have to explicitly license the software.

1. Start *WinARace*
2. Choose "Licence" in the *Help* menu



3. Please fill in a licence name (e.g. Team name or your name) and your contact details
4. Under Licence level you have to select the license level you have ordered with your kit system.

 A screenshot of the '2D Software Licence' dialog box. It contains contact information for 2D Debus & Diebold Meßsysteme GmbH. Below this, it says 'Licence your 2D software Race2013.1'. There is a section for 'Information for 2D' with fields for Licence name, Product ID, Requested licence level, Your name, Team/Company, Your email, Racing series, PC user name, PC name, PC company, and OS product ID. At the bottom, there are fields for 'Licence information from 2D' including Licence key and Serial number. Action buttons at the bottom include 'Copy to clipboard', 'E-Mail', 'Store licence', and 'Cancel'.

5. Send the form via e-mail to 2D by clicking on the <**E-Mail**> button.
6. You will get your license key and serial number back from 2D by email!
7. Fill the information (*Licence key*, *Serial number*) in the respective fields.
8. Finish the licensing process by clicking the button <**Store licence**>

After successfully licensing the software you can use all features available to your license level.

3 How to install the 2D USB drivers

The process of the 2D USB driver installation depends on the operating system you are using and therefore differs accordingly. We support the following operating systems: Windows XP, Windows Vista and Windows 7 or newer.



Please note: The necessary USB driver files will be copied to your PC during the software installation.

Therefore the software installation has to be completed before installing the drivers!

USB driver installation for Windows operating systems XP/Vista/7 or newer.

Preparation:



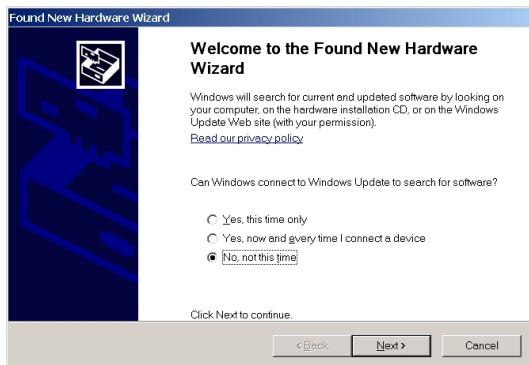
Before connecting the logger with the USB cable to the computer, connect it to external power supply of 12 V.

After you connect the logger with your PC the system detects the new hardware.

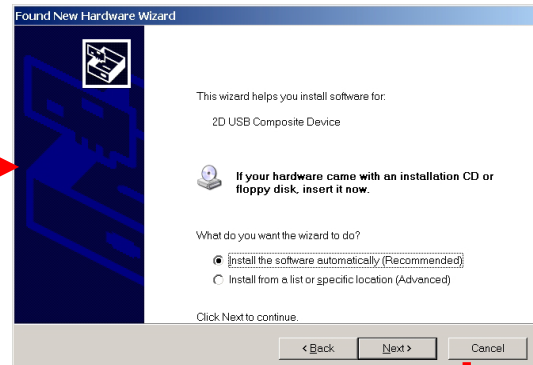
The “Found new Hardware Wizard” will guide you through the installation. Confirm the dialogs as shown on next page to finalize the USB driver installation.

Installation of the “2D virtual COM port device”

Windows XP – 32 bit



Dialog 1: Confirm with button <Next>



Dialog 2: Confirm with button <Next>



Dialog 4: Finalize with button <Finish>



Dialog 3: Confirm always with button <Continue Anyway>

Windows XP – 64 bit

In dialog 2 of the sequence shown above select the option “Install from a list or a specific location (Advanced)”. In the following select the CD drive with the 2D CD inserted. The installer will then automatically locate the driver on the CD.

Windows 7 or newer

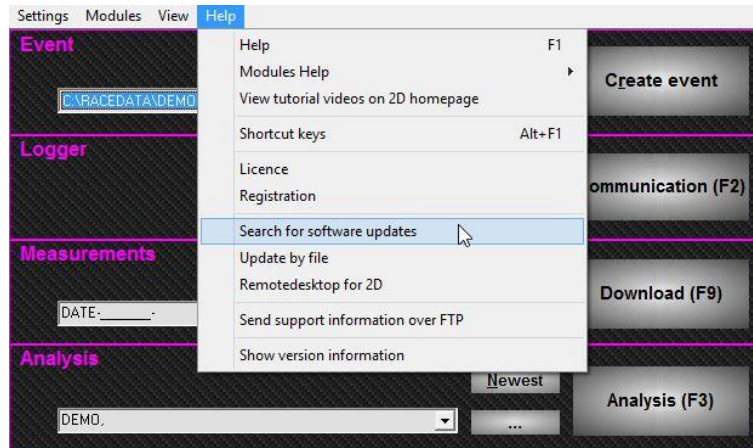
If you have a newer operating system, and the computer has a working connection to the Internet follow the instructions of the “Found new hardware Wizard” and allow it that it can look for the drivers in Windows Update. The installation will then happen automatically.

If the computer is not connected to the Internet follow the same procedure as described for Windows XP – 64 bit.

4 How to update the software via Internet

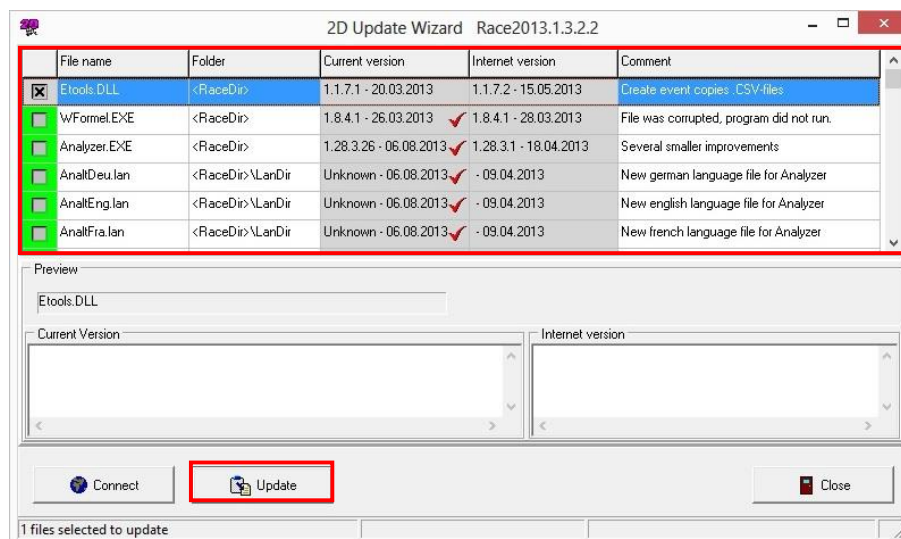
From time to time 2D publishes improvements for your installed software. In order to always have the latest versions you should search periodically for updates.

1. Start WinARace
2. Select menu item **<Help>** - **<Search for software updates>**



The main menu items are also available via right mouse click. That's very practical, if the main menu is hidden.

3. The "2D Internet Update Wizard" offers a list of possible files for update. Check all boxes from the list you want to update.



4. Confirm your selection with the button **<Update>**