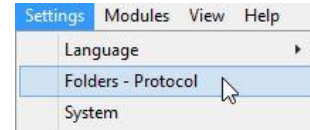


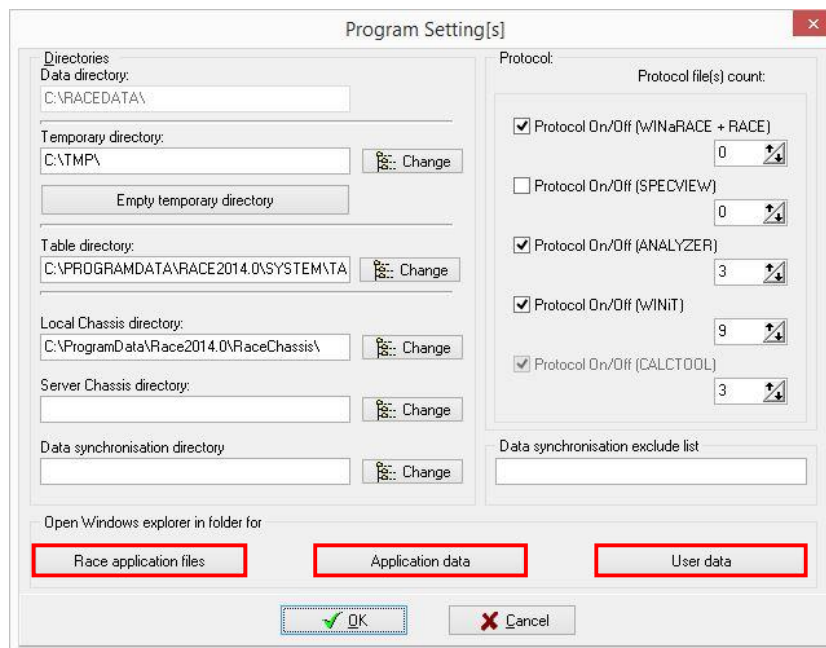
New folder structure of WinARace since 2014

With the new 2014 software version of *WinARace* there are some changes in the folder structure. The new software is split up in different folders (race application files, application data and user data).

For locating these folders start *WinARace* and select *Settings*
 ⇒ *Folders – Protocol*.



At the bottom of the form you can see three buttons:



Race application files:

64 bit Windows: C:\Program files (x86)\Race20XX.Y

32 bit Windows: C:\Program files\Race20XX.Y

This folder contains the 2D executable programs and core files like language or help.

Application data:

Windows 7/8: C:\ProgramData\Race20XX.Y

Windows XP: C:\Documents and Settings\All Users\Application Data\Race20XX.Y

This folder contains all the internal data files like .ini, license, protocol, chassis, system, circuit.

User data:

Windows 7/8: C:\Users\Public\Documents\Race20XX.Y

Windows XP: C:\Documents and Settings\All Users\Documents\Race20XX.Y

This folder contains all the user specific public files like cal-files, math-files, channel settings, templates, etc.