

## Using own user settings on other devices / Creating Backup of your Settings

In order to be able to use the Analyzer's own user settings, such as your own Analyzer templates or layouts, on another PC, it is possible to copy these user settings to a synchronizing directory, such as a server or a USB stick, in order to be able to transfer them from there to a desired PC. By following the steps, you can create a backup of your own Analyzer settings.

The procedure for setting a synchronization directory and uploading data to it is described on page 1. If you only want to integrate your saved settings on a new PC, continue with page 2.

### Preparations:

- Open WinARace on the old PC and under **Help** → **Search for software updates** update the software to the latest version
- Open WinARace on the old PC and set the synchronizing directory (e.g. USB stick or server directory where you want to copy your settings to) under WinARace → **Settings** → **Folders protocol** → **Settings synchronisation directory** (see Figure 1).

In this selected directory all required settings for running your software on another PC are copied later in the next step. The copied directory structure will consist of your current pc-user name and the used Race20\_\_-Software name.

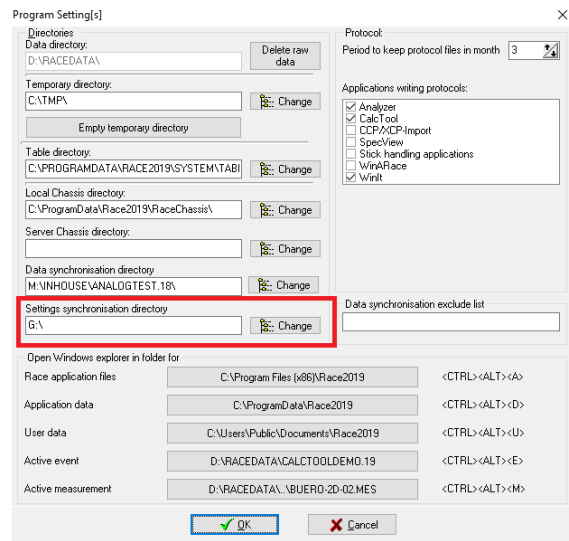


Figure 1 Directory for settings synchronizing settings

### Upload of the Analyzer user settings from the old PC to the defined synchronizing directory:

Press the "**Start Batchfile to Copy 2D Software Settings to another Device**" button in the WinARace toolbar (see Figure 2). The call starts the Windows command prompt (see Figure 3). To start the upload, follow the instructions at the command prompt (press any key).

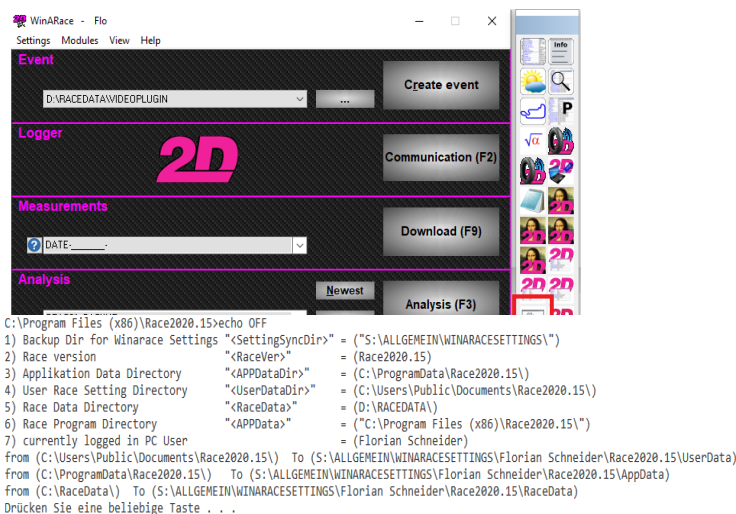


Figure 3 Windows command prompt

Integration of the Analyzer user settings on a new PC:

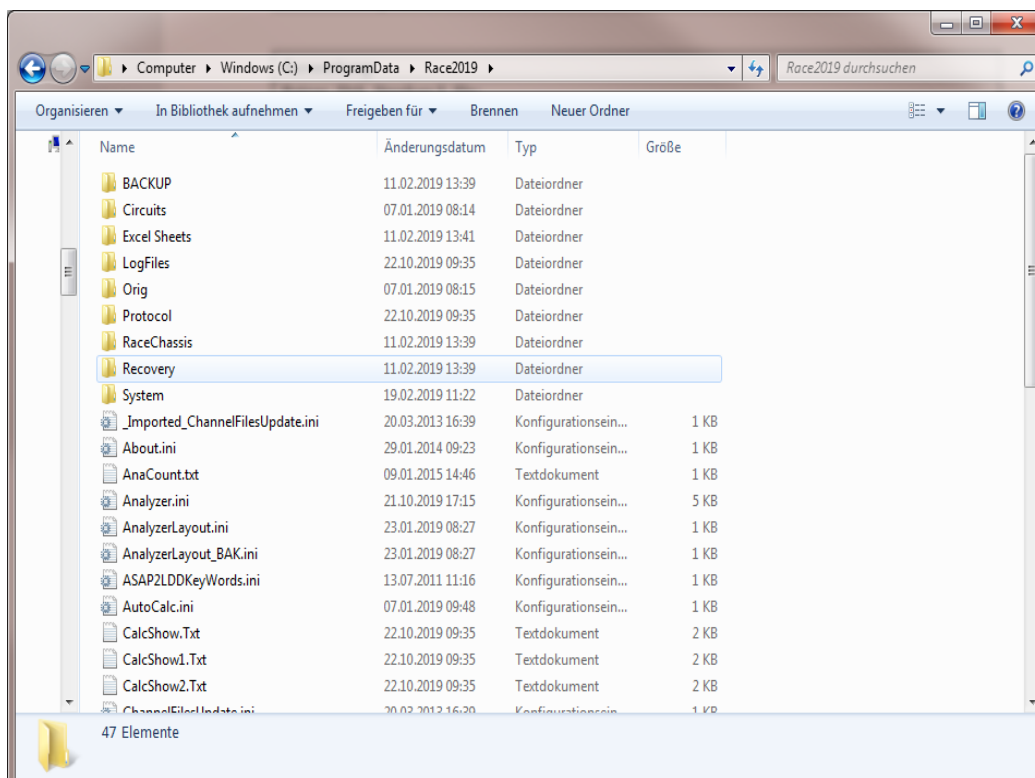
Open **WinARace** on the new PC and under **Help** → **Search for software updates** update the software to the latest version

The folders shown in Figure 4 were automatically created by executing the batch file in the previous step at the location selected in the "Preparations" step (Figure 1).

 AppData	21.10.2019 10:54	Dateiordner
 RaceData	21.10.2019 10:55	Dateiordner
 UserData	21.10.2019 10:53	Dateiordner

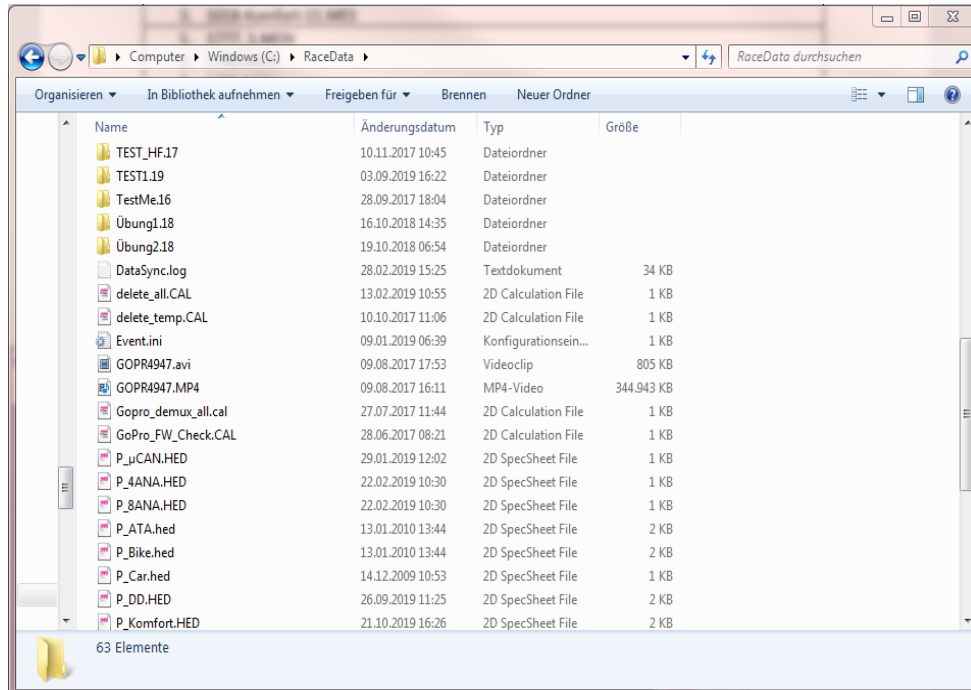
**Figure 4 Folder in the selected settings synchronizing directory**

- AppData:
  - o Open the synchronizing directory (see section "Preparations") in Windows Explorer and copy all files of the application data directory **AppData** ([CTRL + A] → [CTRL + C])
  - o Open **WinARace** on a new PC and press [CTRL + ALT + D] to open the Race20\_ - folder in Windows Explorer (see Figure 5). Paste the data copied in the previous step ([CTRL + V]), thus completely overwriting the previous application data



**Figure 5 Application data directory**

- RaceData:
  - o Open the synchronizing directory (see section "Preparations") in Windows Explorer and copy all the files of the **RaceData** folder ([CTRL + A] → [CTRL + C])
  - o Open **WinARace** on a new PC and press [CTRL + ALT + E] and then go back one directory to the **RACEDATA** directory (see Figure 6).  
 Now insert the data copied in the previous step ([CTRL + V]) and thus partially overwrite the previous data.

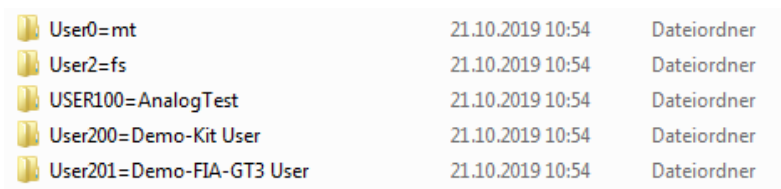


**Figure 6 2D measurement data directory**

- UserData:
 

To use the user settings on the new PC under the same user as on the old PC, a new user must be created on the new PC.

  - o Open the synchronizing directory (see section "Preparations") in Windows Explorer, open folder **Users** and copy the desired user directories (e.g. User2=fs)
  - o On new PC open **WinARace** and press [CTRL + ALT + U] to open the Race20\_\_-folder in Windows Explorer and open the folder **Users** and insert the previously copied user directory (e.g. User2=fs) into this directory (see Figure 7)



**Figure 7 User directory**

The user settings of the old computer are now available on a new computer and stored measurement data can be applied.