

User Management

General description

Purpose of User Management:

A User can store all the visual and technical information on how a user has set up and constructed the *Analyzer* with various views, channel colors, channels groups and the different setting of plots and exports.



Further Information

Whether user management can be used at all depends on the respective licensing of the software. With the **R&D**, **NET** and **TEAM** licences, user management and therefore an unlimited number of different users can be created.

Working as different users is very useful for organizing the 2D-Software *Analyzer* when multiple people are working on one only one computer with 2D-WinARace installation.

Also, for an individually used computer it is very useful to create different users which are covering different topics (Suspension, Engine, GPS, ...).

Beside



Further Information

Users can be deleted, renamed, copied, and exchanged with other users.

Users are managed by a Master-User.

At new WinARace-installations, users from previous installations can be imported at installation!



Documentation reference

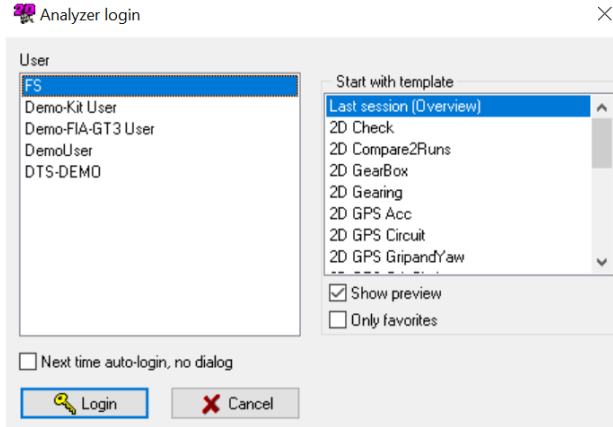
For more information about sharing user please see the manual

User management – Integrating User settings on our website:

<http://2d-datarecording.com/downloads/manuals/>

Enabling User Management:

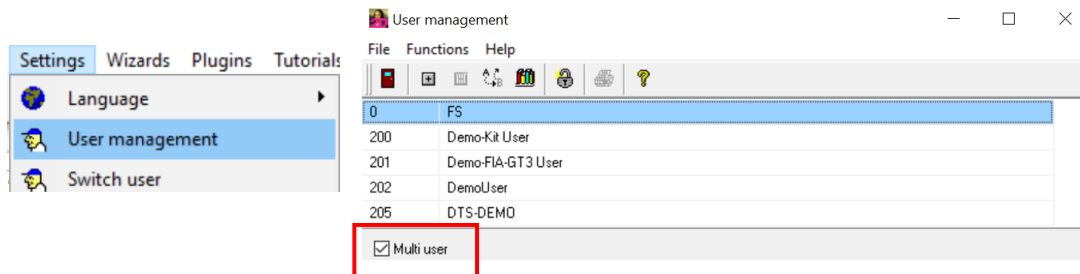
If user management is enabled the following *Analyzer* login window is shown when opening the *Analyzer* from *WinARace*.



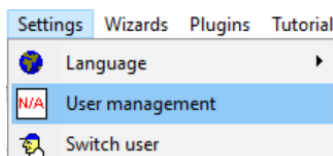
Further Information

User management can be disabled only by Master-User by ticking the box *Next time auto-login, no dialog*

To enable *User Management* in Analyzers tab *Settings* the selection *User management* must be clicked to open the following window and set tick-box *Multi User*:



To disable *User Management* or add or delete users via the *Analyzer*, the Master-User (normally first in list) must be used when opening the *Analyzer*. Otherwise, the *User management* selection in *Analyzer*-tab *Settings* is not available.



Further Information

Master-User is the user which User0 (please see figure at next page)

User Management in Browser:

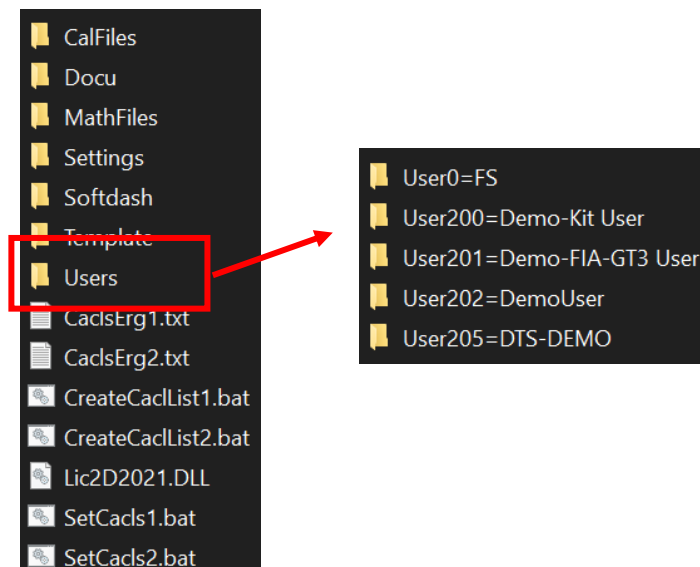
Open *WinARace* and open *Folders - Protocolls* folder via *WinARace-Tab Settings* and open *user data directory* by clicking on the button with respective path



Further Information

Instead of opening *Folders – Protocolls* also shortcut [CTRL]+[ALT]+[U] can be used with *WinARace* opened!

In directory *Users* the different users are stored:



Further Information

Master-User in this example is *User0=FS*



Documentation reference

For more information about sharing user please see the manual

User management – Integrating User settings on our website:

<http://2d-datarecording.com/downloads/manuals/>