

Phases

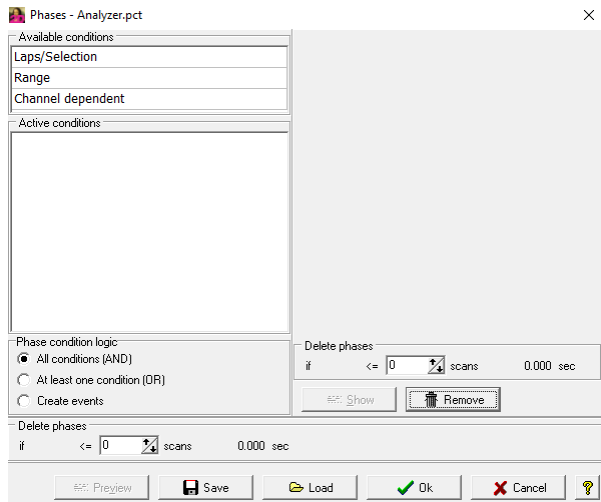
Phases are used to generate a TRUE/FALSE result in the Analyzer with the help of different, self-configurable conditions, which can be used for optical marking. In addition, [ALT + →] and [ALT + ←] can be used to jump back and forth between phases, e.g. to compare channel values quickly and easily.

Besides, phases can be also used in many other functions of the Analyzer, such as *Export*, *MinMax tables*, *X-Y plots*, *histograms*.

If *Phase definition* is pressed under *Measurement* in the Analyzer, a phase configuration window opens.

Under *Available conditions*, various conditions are available, which are added to the *Active conditions* by double-clicking. If you click on a condition in the *Active condition* area, the respective condition can be set in the right part of the window. Of course, more than one condition can be added to the active conditions.

The respective linking of the active conditions takes place in the *Phase condition logic* part, in which it is decided according to which method (AND, OR or event-based) the active conditions are to be linked. Only one type of link can be selected here!



Furthermore, *Delete phases* can be used to enter a time from the start of the measurement for either one phase (in the right-hand window) or for the result of all phases (in the lower part of the configuration window) for which the phase or the result is FALSE.

The button *Preview* can be used to open the preview window, which explains the various conditions:



The phases are switched on and off via *Measurement -> Show phases*.